

Foothill Elementary Kindergarten

Fun!



Parent Information
February 2024





Principal

Felicia Roggero

Kindergarten

Tara Vowels and Laura Sweeney

TK

Dani Martinazzi

Transitional Kindergarten (TK)

Child's Birthday:

September 2, 2019 - June 2, 2020

- **February 20:** GUSD Online Registration Opens
- **Online Registration:** February 20
- **Expanded Learning After School Program:**
 - Must complete GUSD registration to be eligible.
 - TK Expanded Learning registration closes mid-May

Kindergarten de Transición (TK)

Cumpleaños del estudiante:

2 de septiembre - 2 de junio

- **20 de Febrero:** Se abre la inscripción en línea de GUSD
- **Inscripción en línea:** 20 de febrero
- **Programa de Aprendizaje Expandido Después de clases:**
 - Debe completar la inscripción de GUSD para ser elegible.
 - La inscripción de TK del Programa de Aprendizaje Expandido cierra a mediados de mayo.

TK vs. K



TK

Transitional (TK)

- ✗ Content standards are introduced
- ✗ Play-based learning
- ✗ Activities are more hands-on and open-ended, developing fine motor skills, etc.
- ✗ Developing independence
- ✗ Students continue on to traditional kindergarten

Traditional (K)

- ✗ Mastery of content standards is expected
- ✗ More attention is given to paper and pencil activities
- ✗ Lessons & Activities are differentiated depending on students' readiness and needs
- ✗ Developing independence
- ✗ Students move on to first grade

Schedules

Transitional Kindergarten

7:45-8:20	Supervision on Playground
8:20	Morning Bell
8:20-9:00	Settle In Play
9:00-9:45	Whole Group Instruction
9:40-10:00	Recess
10:00-11:00	Small Group Instruction
11:00-11:30	Outdoor Play
11:30-12:15	Lunch
12:15-1:30	Free Choice Play

Kindergarten

7:45-8:20	Supervision on Playground
8:20	Morning Bell
8:20-10:00	Instruction
10:00-10:20	Recess
10:20-11:30	Instruction
11:30-12:15	Lunch
12:15-1:35	Social-Emotional Learning

Beginning of Kindergarten Skills

01

Follow Multi-step Directions

- Cut & glue
- Wash hands & line up

02

Self Control

- Keep body to self
- Wait your turn
- Sit & Listen to story

03

Communicate Needs

- Can you help me?
- I need to use the bathroom.

04

Fine Motor

- Use scissors
- Hold drawing tools
- Write name

Practice talking to unfamiliar adults over the summer.

[More Ways to Prepare for Kindergarten from First 5 California](#)

GUSD Dual Language Immersion Program (DLI) at El Camino School!

DLI Parent Information Sessions (TK/K)

Thursday, Feb. 1st 5:30pm

Tuesday, March 12th 5:30pm

- Applications DUE April 16th, 2024
- Spanish/English Model - 90:10
- Many benefits to multilingualism!
 - *Become bilingual*
 - *Higher academic achievement & cognitive flexibility*
 - *Improved health and mental wellness*
 - *Prepared for education and work in a global world*

Programa de Inmersión en Dos Idiomas (DLI) de GUSD en la Escuela El Camino

Sesiones de Información para Padres de DLI (TK/K)

jueves 1 de febrero a las 5:30pm

martes 12 de marzo a las 5:30pm

- Las solicitudes se cierran el 16 de abril del 2024
- Modelo - 90:10, español/inglés
- ¡Muchos beneficios del multilingüismo!
 - *Convertirse en bilingüe*
 - *Mayor rendimiento académico y flexibilidad cognitiva*
 - *Mejora la salud y el bienestar mental*
 - *Preparado para la educación y el trabajo en un mundo global*

Educación Especial en TK / K

Declaración del Distrito
Escolar de la Unión de
Goleta sobre la
continuidad de prácticas
y servicios inclusivos

Special Education in TK / K

Goleta Union School
District's Statement on
Inclusive Practices and
Services Continuum

Inclusión / Inclusion



“La inclusión se refiere a incluir a los niños con discapacidad en entornos educativos, junto con sus compañeros sin discapacidad; mantener altas expectativas y promover intencionalmente la participación en todas las actividades sociales y de aprendizaje, facilitadas por adaptaciones individualizadas; y utilizar servicios y apoyos basados en evidencia para fomentar su desarrollo (cognitivo, lingüístico, comunicativo, físico, conductual y socioemocional), las amistades con sus compañeros y el sentido de pertenencia.”

“Inclusion refers to including children with disabilities in educational settings, together with their peers without disabilities; holding high expectations and intentionally promoting participation in all learning and social activities, facilitated by individualized accommodations; and using evidence-based services and supports to foster their development (cognitive, language, communication, physical, behavioral, and social-emotional) , friendships with peers, and sense of belonging.”

U.S. DEPARTMENT OF HEALTH AND HUMAN SERVICES & U.S. DEPARTMENT OF EDUCATION
POLICY STATEMENT ON INCLUSION OF CHILDREN WITH DISABILITIES IN EARLY CHILDHOOD
PROGRAMS September 14, 2015

Inclusión / Inclusion

Esto se aplica a todos los niños pequeños con discapacidades, desde aquellos con discapacidades más leves hasta aquellos con discapacidades más importantes.

This applies to all young children with disabilities, from those with the mildest disabilities, to those with the most significant disabilities.



Apoyo continuo / Continuum of Support

Todas las Escuelas de GUSD:

- Maestros/as especialistas en educación general y apoyo leve/moderado
- Plan de estudios adoptado por el distrito
- Intervenciones y apoyo para el comportamiento positivo en toda la escuela
- Proveedores de Servicios: Patólogo/a del Habla y Lenguaje, BCBA, Terapeuta Ocupacional, Psicólogo Escolar

And so much more!

¡Y mucho más!

All GUSD Schools:

- General Education and Mild/Moderate Support Education Specialist Teachers
- District Adopted Curriculum
- School Wide Positive Behavior Interventions and Support
- Service Providers: Speech & Language Pathologist, BCBA, Occupational Therapist, School Psychologist

Programas intensivos de educación especial

- Acceso a la Educación General
- Educación General ↔ Plan de estudios modificado
- Apoyos de comportamiento/habilidades sociales
- Servicios individuales como se indica en el IEP
- Apoyos integrados en el salón de clases

**Adaptive Daily Living
Vida Diaria Adaptativa**

**Social Skills & Behaviors
Habilidades Sociales y
Comportamientos**

Extensive Support Needs Special Education Programs

- Access to General Education
- General Education ↔ Modified Curriculum
- Behavior/Social Skills Supports
- Individual Services as Stated on IEP
- Embedded Classroom Supports

About Foothill



Principal

Felicia Roggero
froggero@gusd.us

395

Students K-6 enrolled for 2023-24
(includes Goleta Family School)

Mascot

Falcons

Colors

Purple & Yellow





Goleta Family School

K-6 GUSD program
at Foothill Elementary

GFS Parent Information Session (required)

Tuesday, February 27: 6-8pm

Spanish interpretation available

GFS Tour (required)

Wednesday, February 28: 9am-10am

- Multi-age classrooms
- Focus on environmental education and outdoor learning, including field trips & camping trips
- Parent involvement (volunteering/chaperoning) is required.
- Applications **DUE Feb. 29, 2024**
- www.goletafamilyschool.com

Escuela Familiar de Goleta

Programa K-6 de GUSD
En la Escuela Primaria Foothill

**Sesión informativa para padres sobre GFS
(obligatoria)**

Martes 27 de febrero: de las 6 a las 8 de la tarde

Interpretación en español disponible

Tour del sitio (obligatorio)

Miércoles 28 de febrero: de las 9 a las 10 de la mañana

- Salones de clases con niños de varias edades
 - Enfoque en la educación medioambiental y el aprendizaje al aire libre, incluyendo excursiones y campamentos.
 - Se requiere la participación de los padres como (voluntarios/acompañantes).
 - **Fecha límite para entregar solicitudes: 29 de febrero de 2024**
- www.goletafamilyschool.com

Schoolwide Expectations: PBIS

- Teamwork
- Community
- Collaboration
- Growth Mindset
- Celebrations
- School Culture

FOOTHILL FALCONS AND GOLETA FAMILY SCHOOL

SOAR TOGETHER!

SAFE

OPEN

ACCEPTING

RESPECTFUL AND
RESPONSIBLE



Meals

- ▶ Breakfast and Lunch are available to all students.
- ▶ Monthly menus on GUSD website and sent home in Friday Folders.
- ▶ Breakfast is offered before school and snack is offered at morning recess.
- ▶ Students eat and then play.



How do I stay informed?

Parent Square

Classroom newsletters, school-wide events, PTA information, and district information posted.

Accounts made for new families in the fall.



[ParentSquare Information Video](#)

Get Involved with Foothill School

- Foothill PTA (www.foothillpta.com)
- FUND
- School Site Council
- District Advisory Council
- District Committees
- English Language Advisory Council
- Classroom Volunteer



Support your school!

Look

Immunization & Health Information



School Nurse
Meagan De Carlo
mdecarlo@gusd.us

Immunizations

- REQUIRED BY THE FIRST DAY OF SCHOOL
- STATE MANDATE
- Special circumstances contact the school RN

Medications at School

- Provider authorization required for prescription & OTC medications
- Stored and administered by the health office trained staff or RN

Keep us Informed

- Medical conditions & health history-allergies, asthma, etc.
- Give accurate student health information when registering

(805) 681-1268 ext. 1445

Illness

Please do not send your child to school sick!

Please do not give medications to hide symptoms.

Please be available if your child needs to be sent home or have a reliable back-up person-KEEP EMERGENCY CONTACT NUMBERS UP TO DATE!



[GUSD COVID-19 Information](#)

Take care!



Registration Information Experts



Anne Gould –School Office Manager
agould@gusd.us



Val Voita -School Office Assistant
vvoita@gusd.us

Registration Information

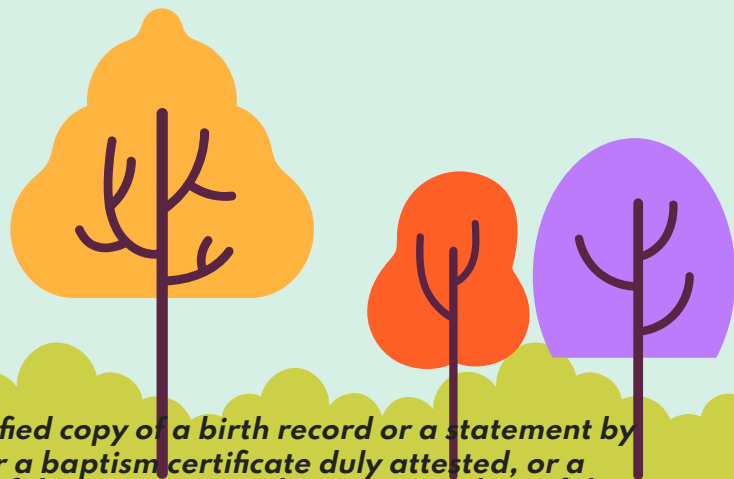
Online registration through Synergy/ParentVUE
Information needed:



- **Student's Birth Certificate****
- **Immunizations/Physical (after March 1)***
- **Two proof of residence***
- Emergency contact info (keep it current)
- Doctor and Dentist contact info
- Previous schools attended
- **Custodial documentation**
- Home Language Survey
- Health Questionnaire

*** scanned and uploaded**

In lieu of a birth certificate, evidence may be in the form of a certified copy of a birth record or a statement by the local registrar or a county recorder certifying the date of birth, or a baptism certificate duly attested, or a passport, or, when none of the foregoing is obtainable, an affidavit of the parent, guardian, or custodian of the minor, or any other appropriate means of proving the age of the child as prescribed by the governing board of the school district."



Next Steps...

Step 1

February 20, 2024
Enroll online for
TK/kindergarten
-Foothill website
-Parents Tab
-Online Registration



Step 2

Sign up for
kindergarten screening
May 15th & 22nd
-**only for enrolled
students** who did not
attend TK in GUSD



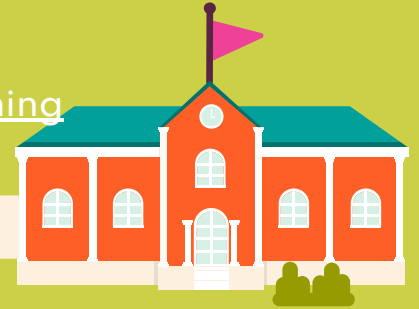
Step 3

February 20-May 1, 2024
Sign-up for @afterschool
care if needed
-GUSD website
-Parents Tab
-Expanded Learning



Step 4

Visit the school campus
over summer.
PTA may host kinder
playdates.



Great!



Foothill School



Goleta Union
School District

For more information visit.....

community



Expanded Learning
After School Programs

After School Program

Programa después de la escuela

TK & Kindergarten

Expanded Learning Childcare Program

The Expanded Learning After School Program strives to support the GUSD mission by providing a safe, engaging and supportive environment for students. We believe that children benefit from self-directed and creative play, organized games and sports as well as arts and crafts. The purpose of the After School Program is to provide families with high-quality care with an emphasis on wellness and socio-emotional learning. We emphasize that an environment in which everyone is "Safe-Respectful-Cooperative-Kind" supports our community.

El Programa después de clases de Expanded Learning se esfuerza por apoyar la misión de GUSD al proporcionar un entorno seguro, atractivo y de apoyo para los estudiantes. Creemos que los niños se benefician del juego creativo y autodirigido, los juegos y deportes organizados, así como las artes y manualidades. El propósito del programa extracurricular es brindar a las familias atención de alta calidad con énfasis en el bienestar y el aprendizaje socioemocional. Destacamos en que un entorno en el que todos son "seguros-respetuosos-cooperativos-amables" apoya a nuestra comunidad.

School Based Childcare Options

- Kinderbridge only enrollment

1:30pm-3:00pm (Monday-Friday)

- Kinderbridge + After School Session

1:30pm-5:30pm (Monday-Friday)

~ 5-day or 4-day enrollment option for the After School Session

Opciones de cuidado escolar

- Inscripción de solo Kinderbridge

1:30pm-3:00pm (lunes-viernes)

- *Kinderbridge* + Sesión después de clases

1:30pm-5:30pm (lunes-viernes)

opciones de inscripción para el programa después de clases ~ 5-días o 4-días

Program Fees

Kinderbridge only=\$245/month

Kinderbridge & 4-days of After School Session=\$535/month

Kinderbridge & 5-days of After School Session=\$550/month

Financial Assistance & Discounts

Sibling Discounts, Employee discounts

ASES & ELOP Financial Assistance

- Must complete Education & Nutrition Benefit Form
- ASES/ELOP = 100% discount
- Family Support Tier = 50% discount

Subject to space availability

Costo del programa

Solo Kinderbridge = \$245/month

Kinderbridge y 4-días de sesión después de clases = \$535/month

Kinderbridge y 5-días de sesión después de clases = \$550/month

Asistencia financiera y descuentos

Descuento para hermanos, Descuento de empleado

Asistencia financiera ASES & ELOP

- Debe completar el formulario de beneficios de educación y nutrición
- ASES/ELOP = descuento de 100%
- Nivel de apoyo familiar = descuento de 50%

Sujeta a disponibilidad de espacio.

Registration opens...

Feb. 20 - May 1st Regular Registration

May 2nd - summer Waitlist Registration

Registration Information and Links

GUSD Expanded Learning Website

- GUSD Homepage
- “Parent Tab” drop down menu
- Select “Expanded Learning Program”

Las inscripciones comienzan ...

20 de febrero - 1 de mayo Inscripción regular

2 de mayo -verano Inscripción de lista de espera

Información sobre la inscripción y enlaces

Página de internet del programa extracurricular de aprendizaje ampliado GUSD

- página de inicio del sitio GUSD
- bajo el menú de “ Parent”
- Seleccione “Expanded Learning Program”

Program Contact info

Website:

<https://sites.google.com/goleta.k12.ca.us/afterschool2019/general-asp-info>

Program Secretary:

Ms. Rocio Melchor

805-681-1200 ext. 2211

Información de contacto para el Programa

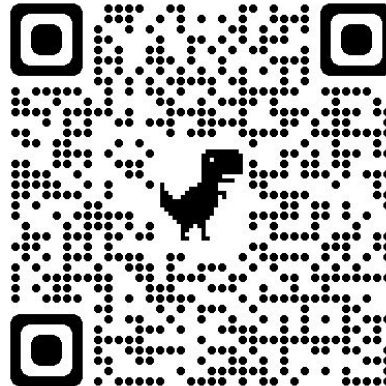
Página web:

<https://sites.google.com/goleta.k12.ca.us/afterschool2019/general-asp-info>

Secretaria del programa:

Srta. Rocio Melchor

805-681-1200 ext. 2211



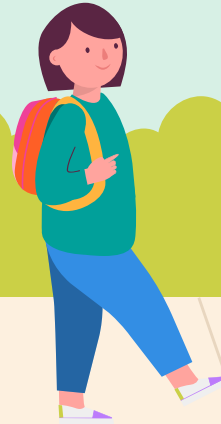
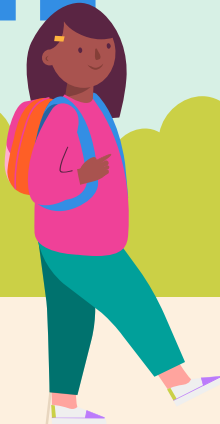
Safety Town

Visit

www.sbsafetytown.org



Handouts on back table



Puede sentirse inseguro de que su hijo/a esté listo para TK / K

¡Pero TK / K está listo para su hijo/a!

Comienza la inscripción de TK/K:

**Hoy
GUSD sitio web →
Padres →
Inscripción**

You May Feel Unsure That Your Child Is Ready for TK / K...

But TK / K Is ready for your child!

TK / K registration begins:

**Today
GUSD website →
Parents →
Registration**

Thank you!



FOOTHILL SCHOOL
711 Ribera Drive
Santa Barbara, CA 93111
805-681-1268
<https://www.gusd.us/foothill>

First Day of Kindergarten
August 21, 2024