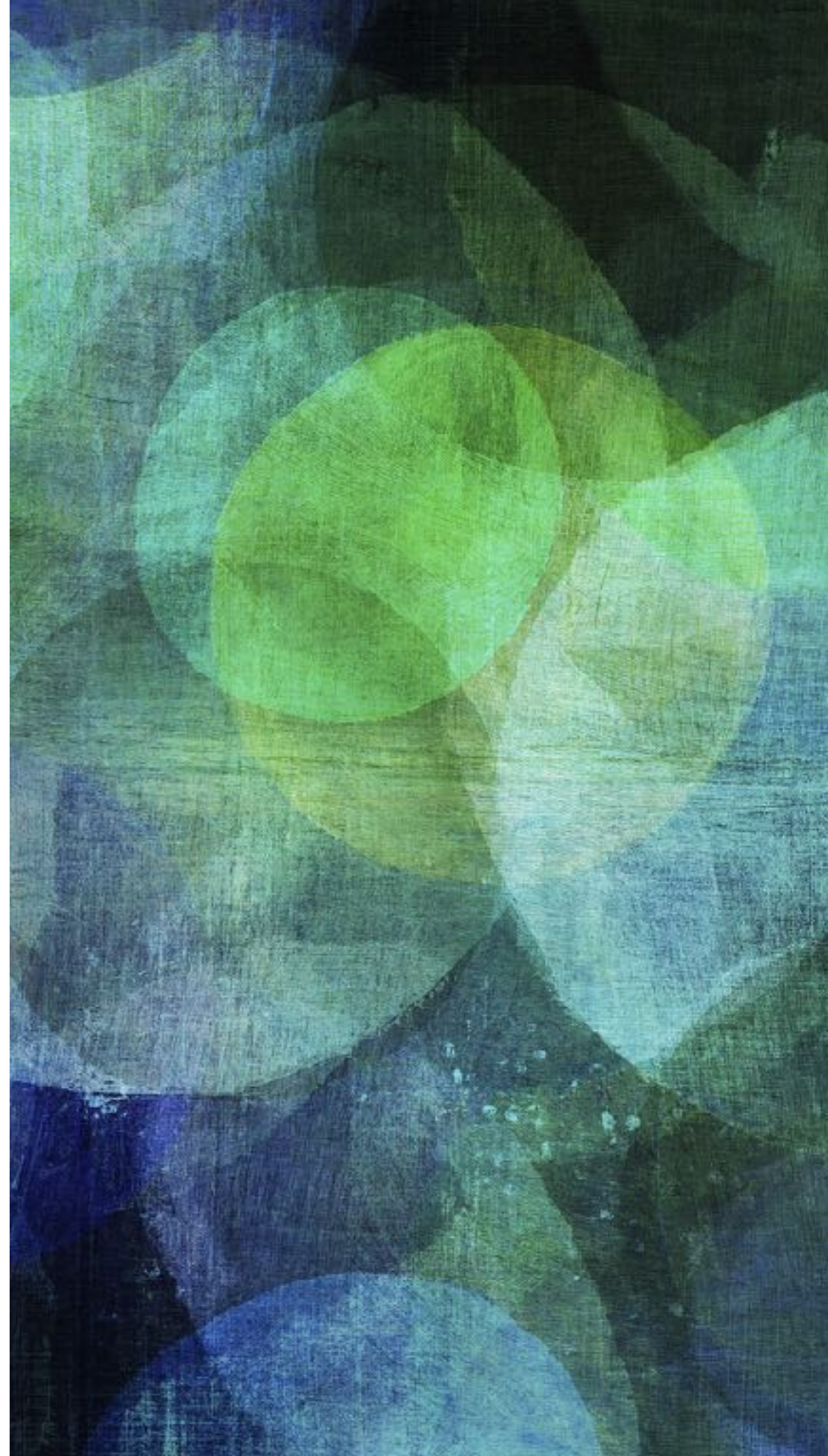


GUSD'S GES PARENT INFORMATION NIGHT

ELEMENTARY ACADEMICS

Brigitte Haley
February 10, 2020



Tonight's Agenda:

- *Brief overview of Math, ELA, & Science used in K-6*
 - *Brigitte Haley, GUSD TOSA, Differentiation Specialist & Jill Means, Ellwood Teacher/ Gifted Education Teacher Rep., & Kandie White, Science TOSA*
-
- *Brief Q & A (written notecards available also)*

MATH

Adopted 2015-

Bridges in Mathematics K-5



includes **Number Corner** program and consists of:

**Problems & Investigations*

**Math Forums*

**Assessments*

**Manipulatives*

**Problem Strings*

**Work Places*

**Home Connections*

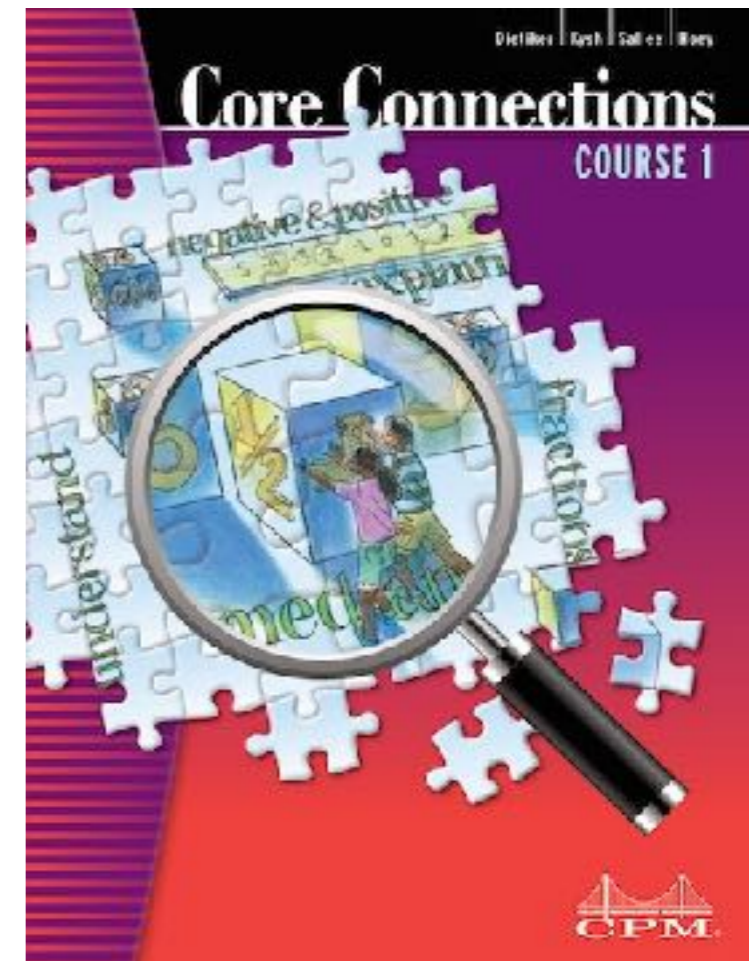
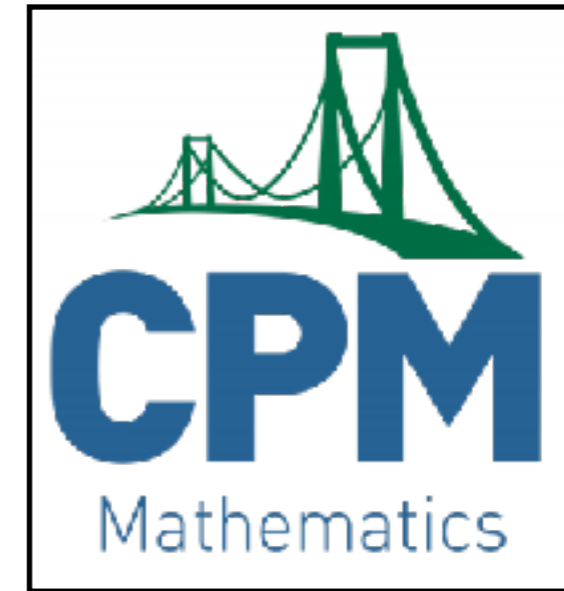
**Consumables*

- *Teachers use a variety of whole group instruction, small group work, partnering, and work place games/activities that allow for differentiation*

MATH

6th Grade Math Program

K-5th



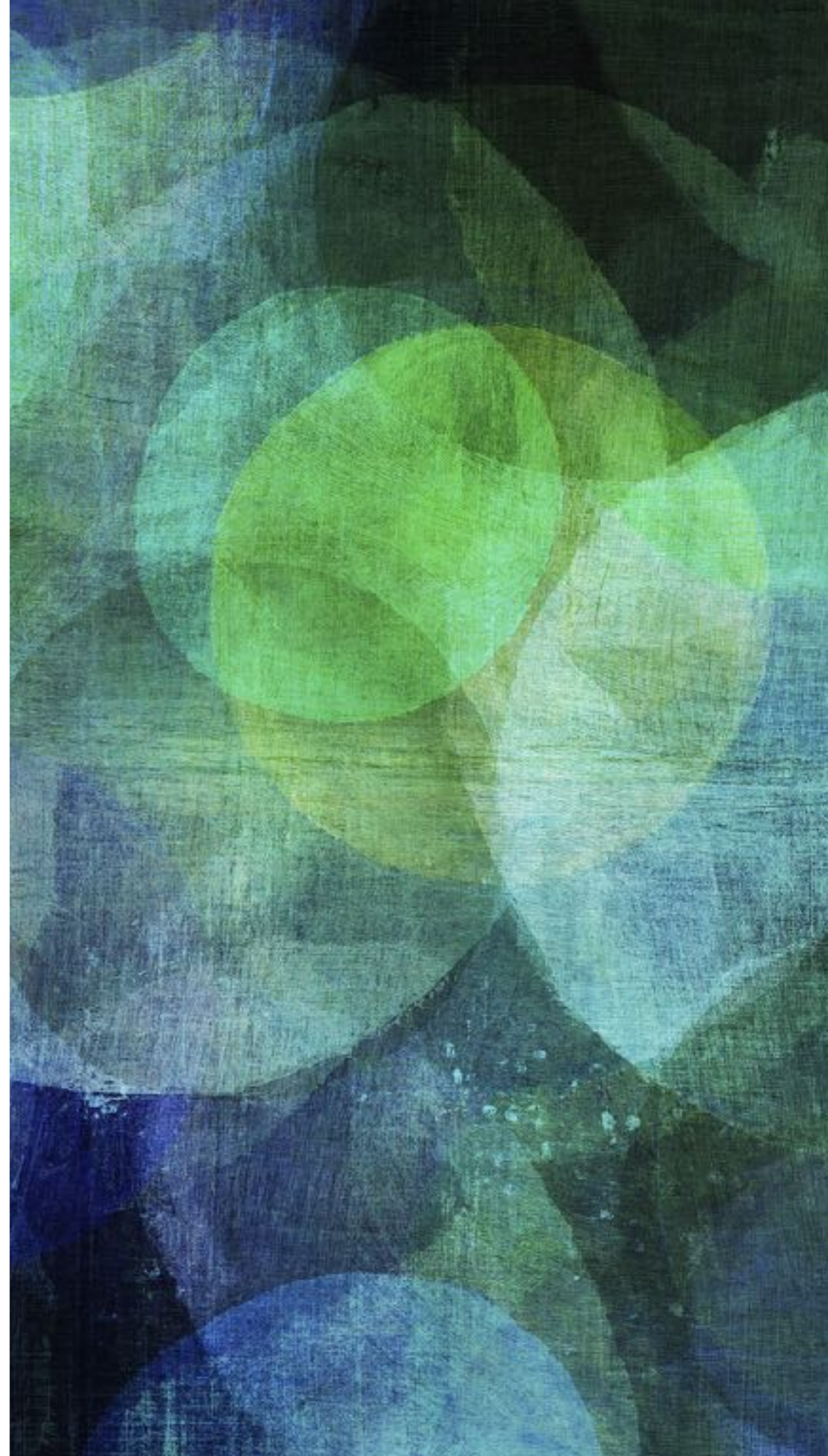


MATH

- GUSD's core curriculum provides rigorous math tasks that allow for many types of learners.
- The tasks and activities are designed to be engaging, promote productive struggle, and often have multiple solution strategies.
- It's not about going faster, it's about going deeper.

▶ LET'S WATCH
A 3RD GRADE
NUMBER
TALK

▶ video



WHOLE-CLASS LEARNING IN HETEROGENEOUS SETTINGS

- *Tasks and problems are designed to provide access and challenge all students.*
- *When students feel their ideas are valued both by the teacher and fellow students and know they can contribute to whole class learning, there is more buy-in and collaboration.*
- *Research has shown that all learners benefit in a heterogeneous setting. (including in schools with larger class sizes)*

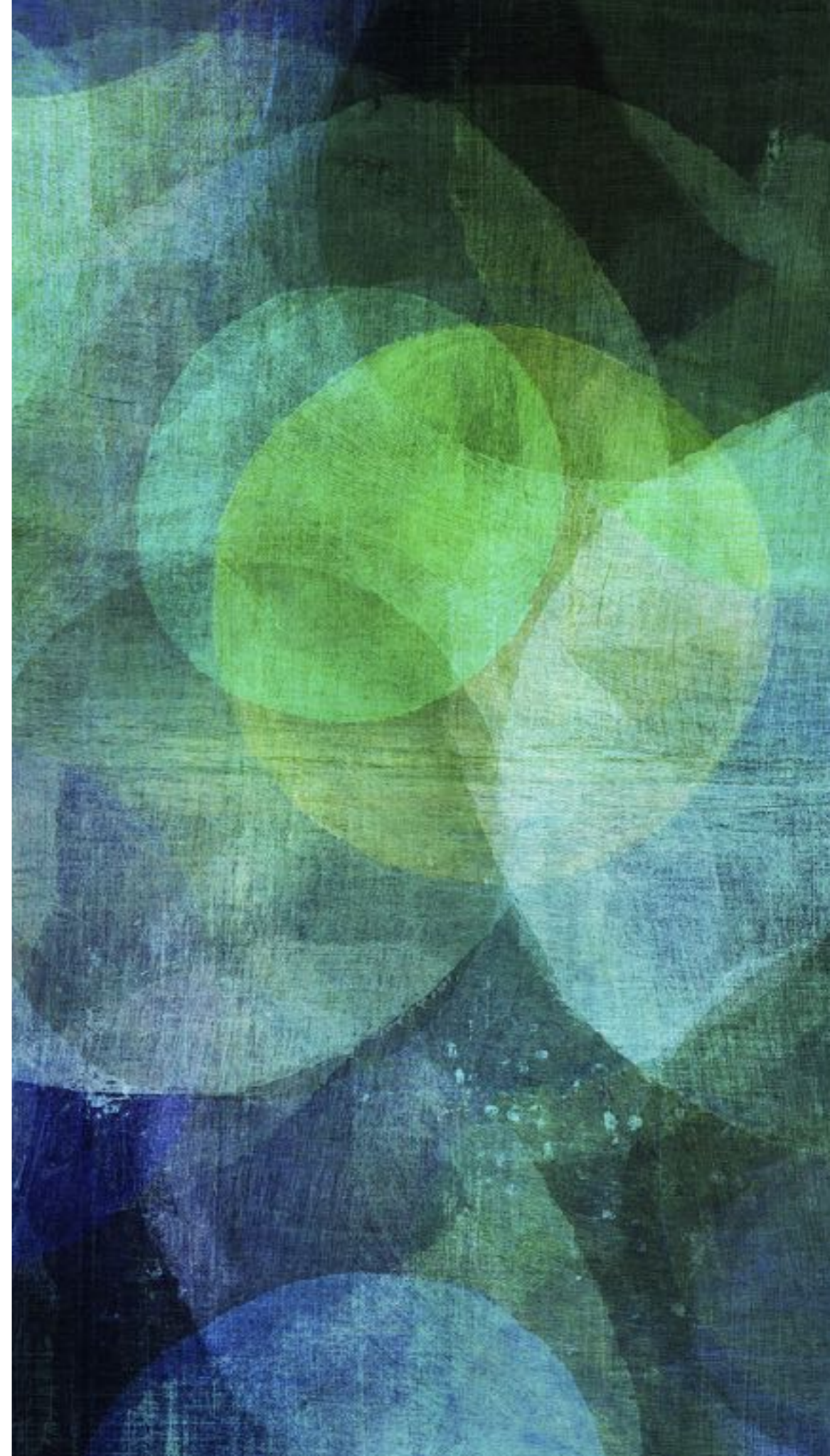
(ELA) English- Language Arts *K-6



Adopted 2017-

Includes Reading-Writing Workshop text, Close-Reading Companion, Digital Resources, WonderWorks Intervention, Leveled Readers, ELD & consumables

- All learners benefit from the variety of thinking that is expressed, including more able students who benefit from the need to explain their thinking clearly and concisely.
 - Students who are a part of a supportive community also take more risks, advocating for their own learning by asking questions to solidify their understanding.
-





Teachers matter more to student achievement than any other aspect of schooling.

Many factors contribute to a student's academic performance, including individual characteristics and family and neighborhood experiences. But research suggests that, among school-related factors, teachers matter most. When it comes to student performance on reading and math tests, a teacher is estimated to have two to three times the impact of any other school factor, including services, facilities, and even leadership.



DEPTH & COMPLEXITY

- literature circles with tasks
- whole-class discussion focus
- individual challenge questions

THE POSSIBILITIES ARE
ENDLESS



NGSS: THE NEXT GENERATION OF SCIENCE STANDARDS

GUSD ADOPTED NEW SCIENCE CURRICULUM

WE ARE IN YEAR 1

AmplifyScience



SOME RESOURCES FOR PARENTS:



tricitygate.org



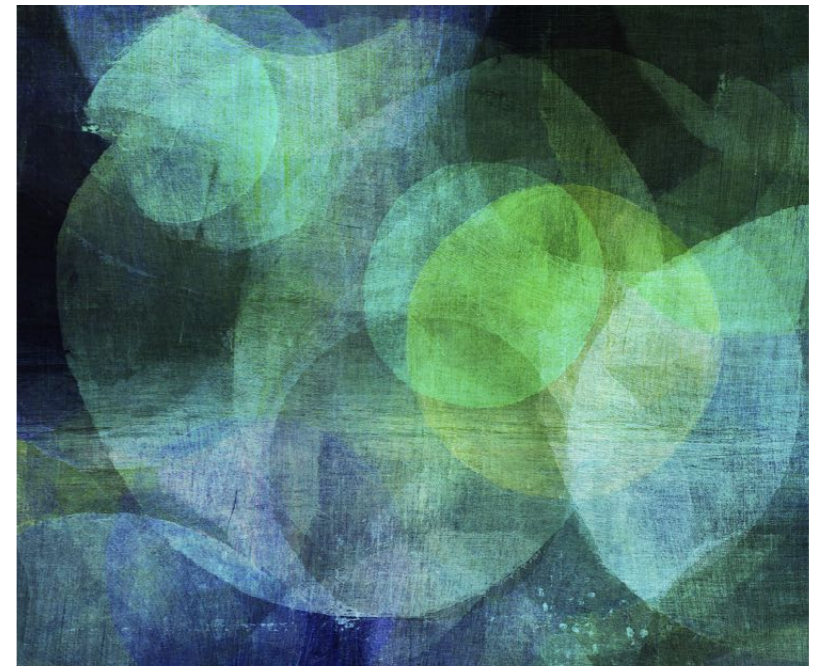
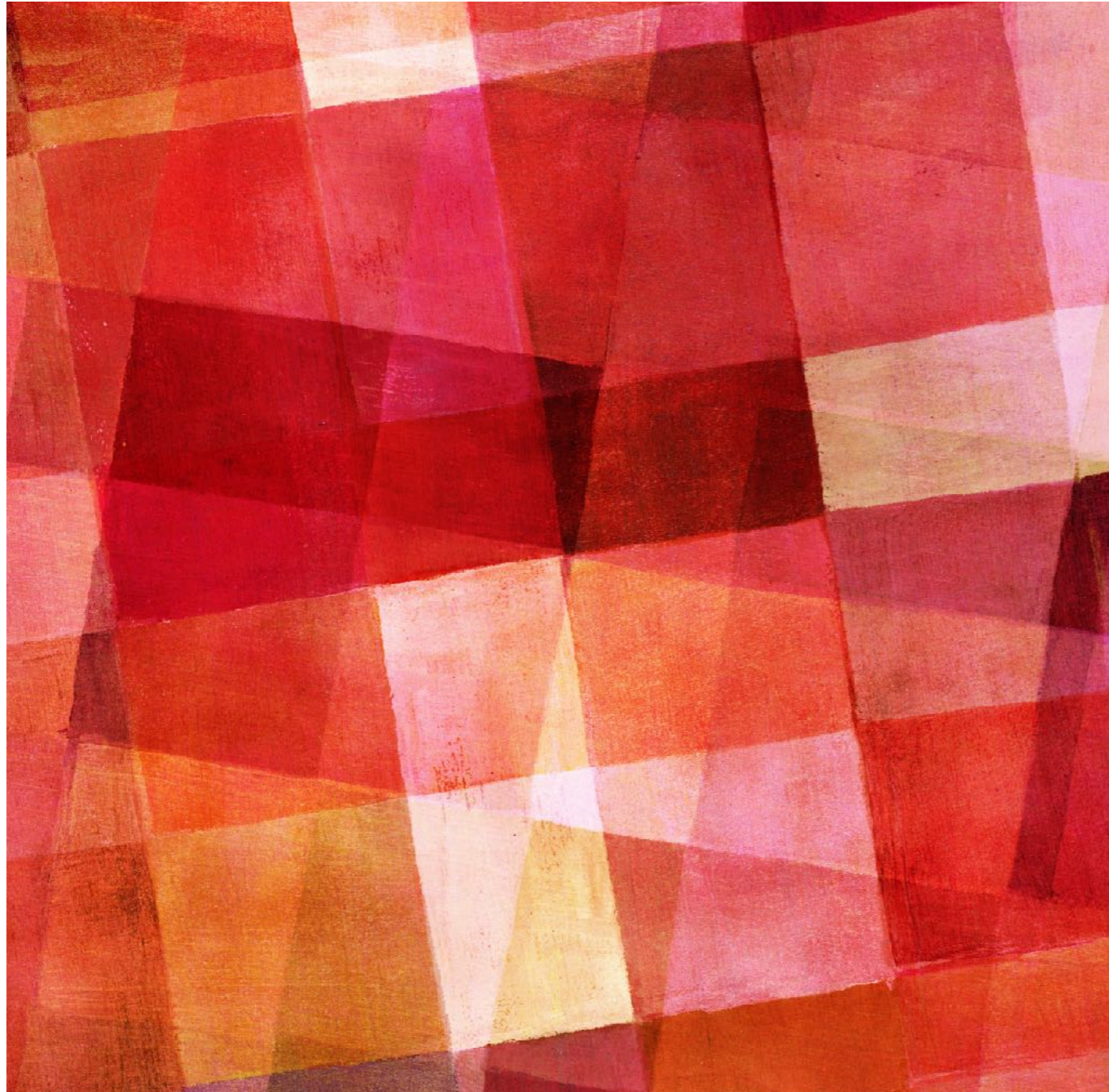
cagifted.org



nagc.org



sengifted.org



THANK YOU